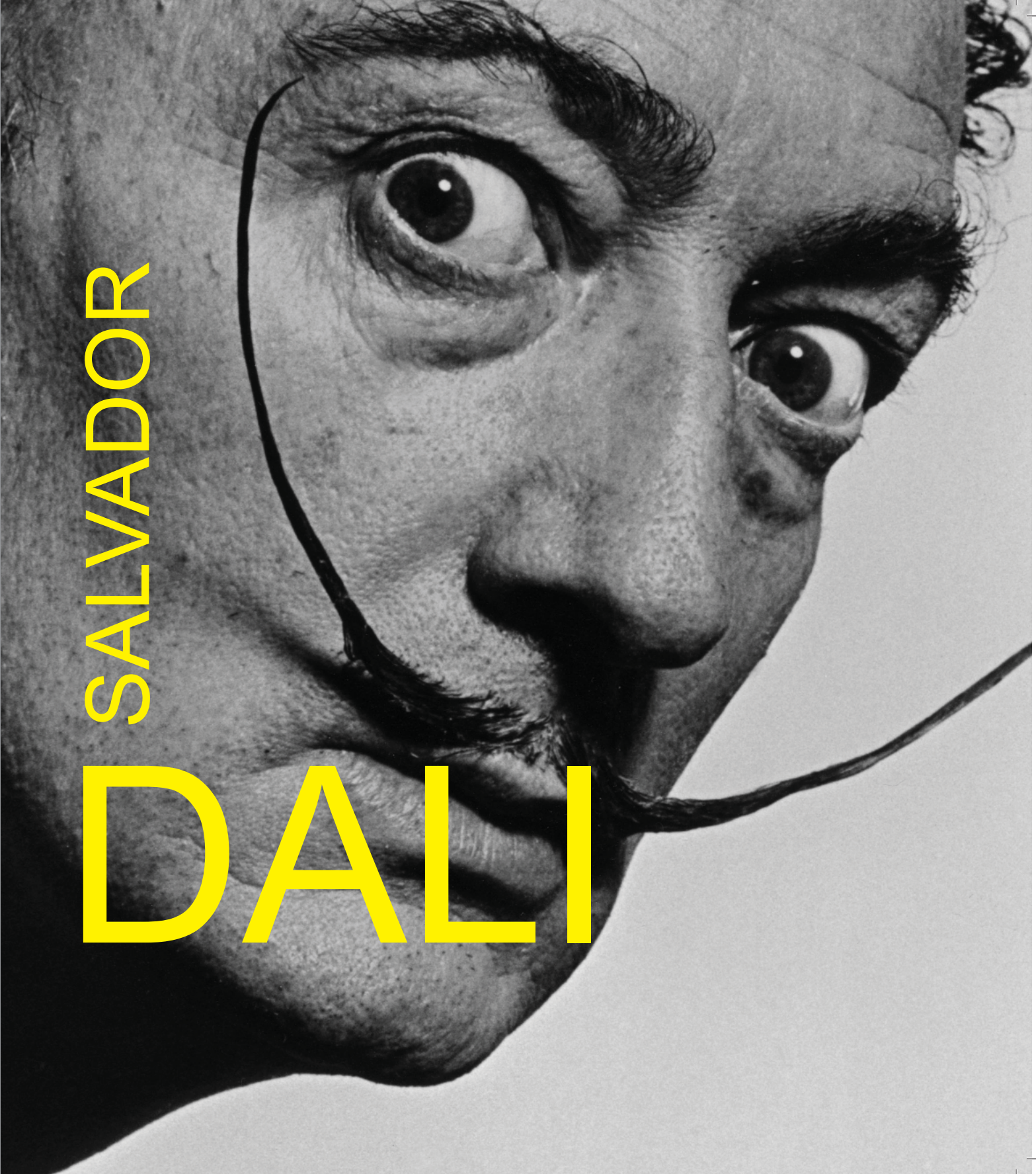


Salvador Dali

Designed by Fredrik Pedram



SALVADOR
DALI

References:

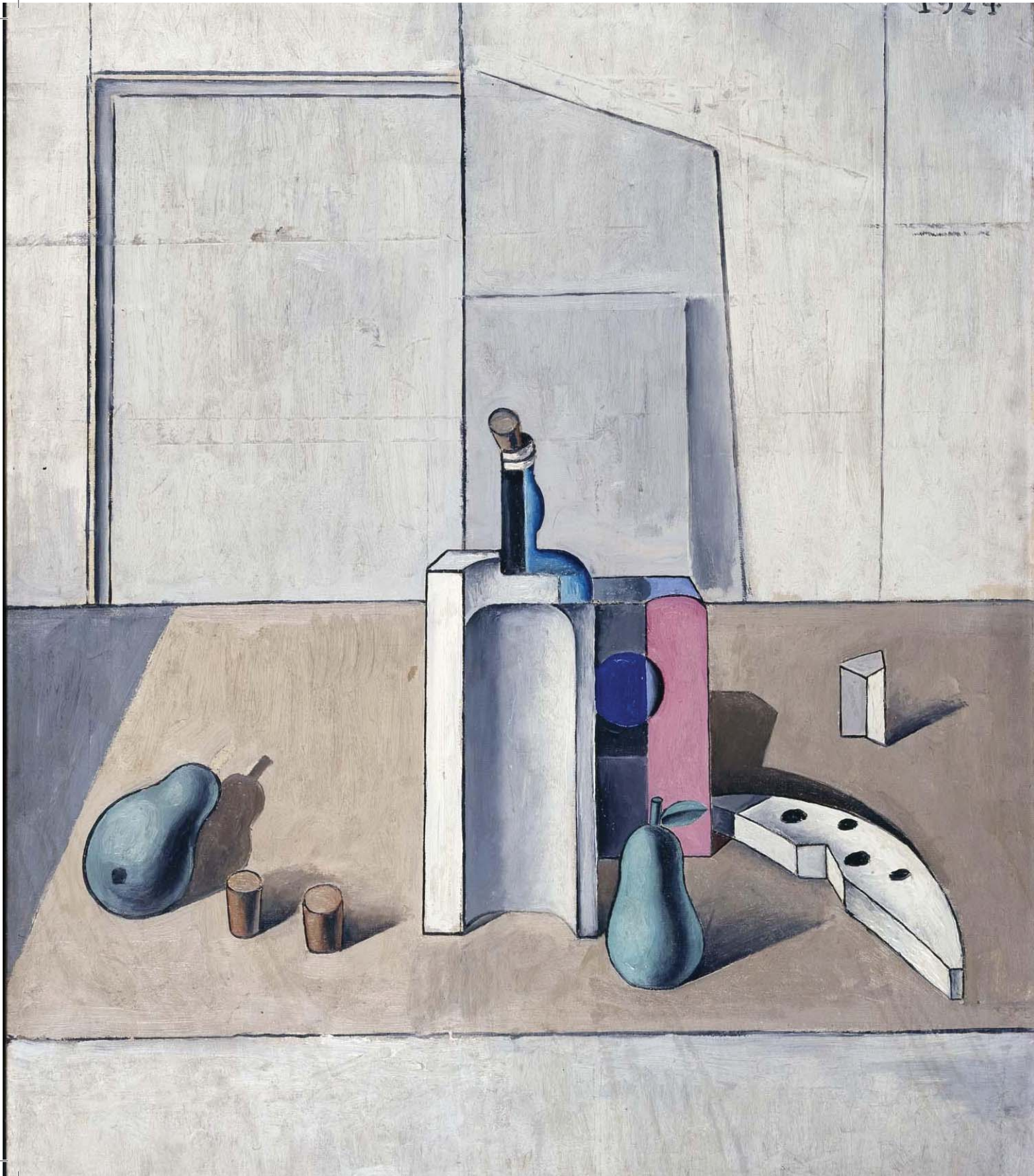
The Museum of Modern Art [moma.org]

Wiki Art [wikiart.org]

Jake Gallagher. *The Surrealist Style Of Salvador Dali.*

Still Life

by Salvador Dali- 1924



SALVADOR DALÍ

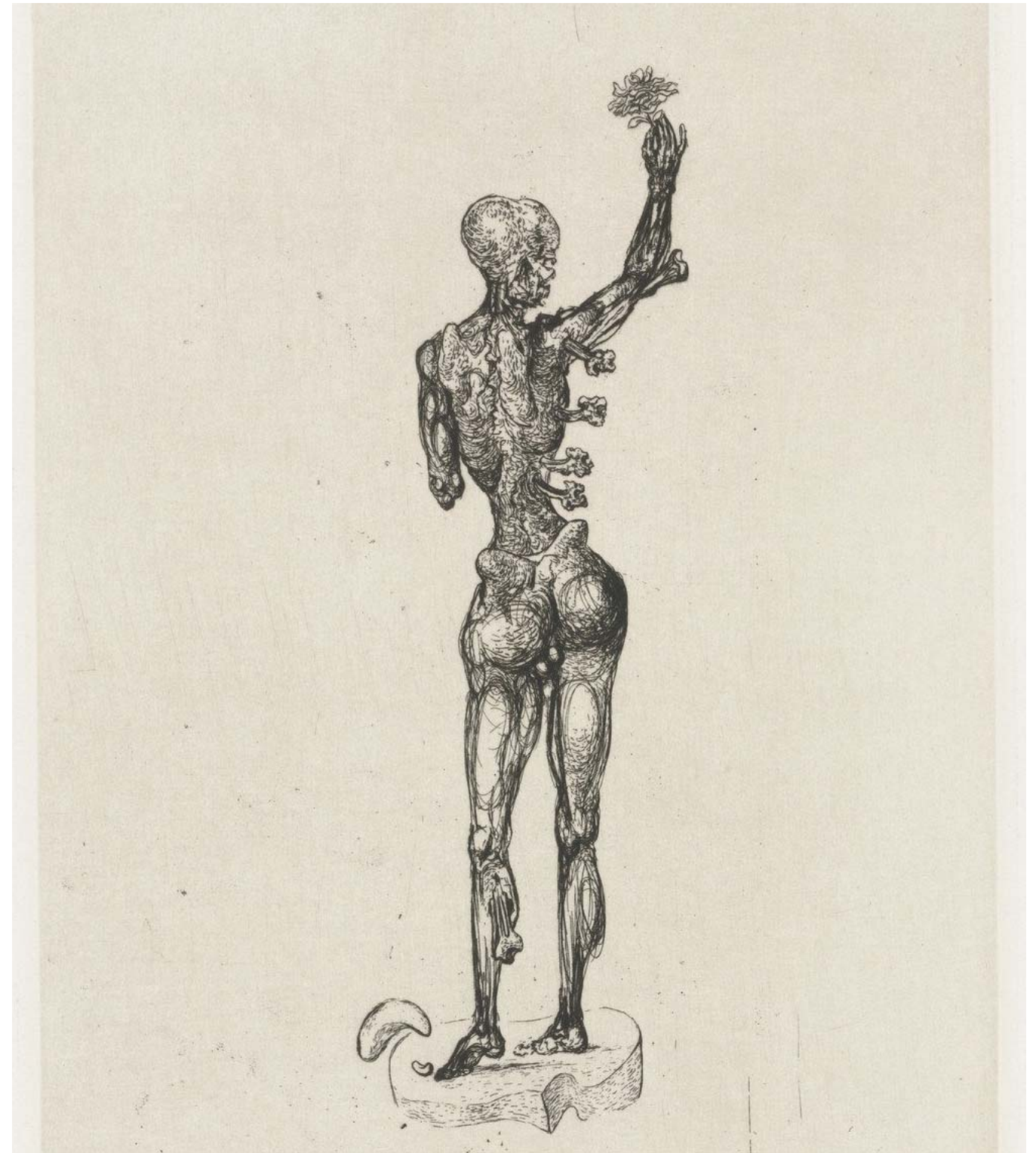
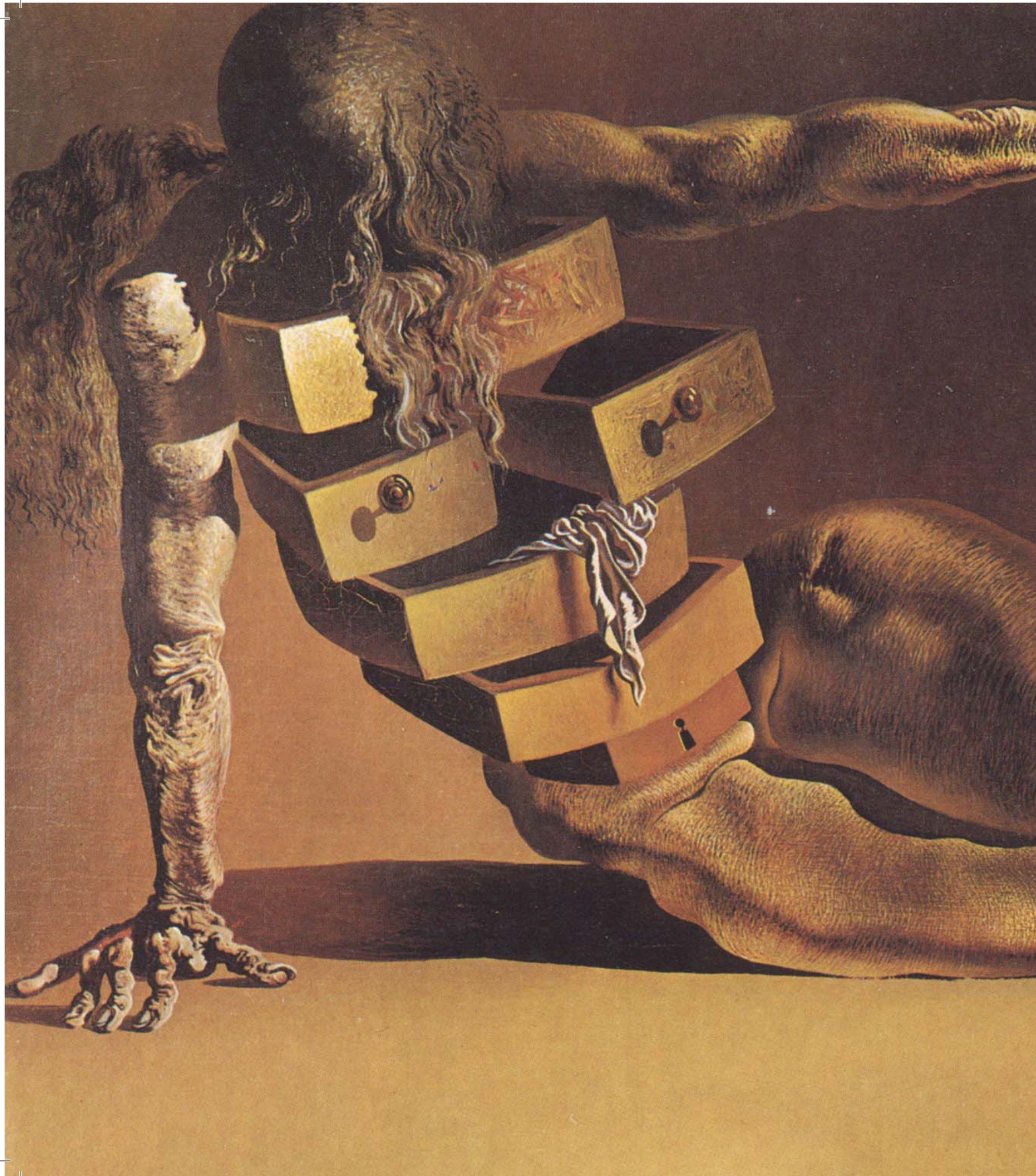
The famous Spanish surrealist painter, Salvador Dali had artistic repertoire that included sculpture, painting, photography, multimedia work, and collaborations with other artists, most notably independent surrealist films. Dali soon became a leader of the Surrealist Movement. His painting, *The Persistence of Memory*, with the soft or melting watches is still one of the best-known surrealist works.





*Debris of an Automobile Giving Birth to a Blind
Horse Biting a Telephone
by Salvador Dali- 1938*







Dali was deeply influenced by the work of Sigmund Freud, contending “The only difference between immortal Greece and contemporary times is Sigmund Freud, who discovered that the human body, purely platonic in the Greek epoch, is nowadays full of secret drawers that only psychoanalysis is capable to open.”

The Anthropomorphic Cabinet
by Salvador Dalí- 1936

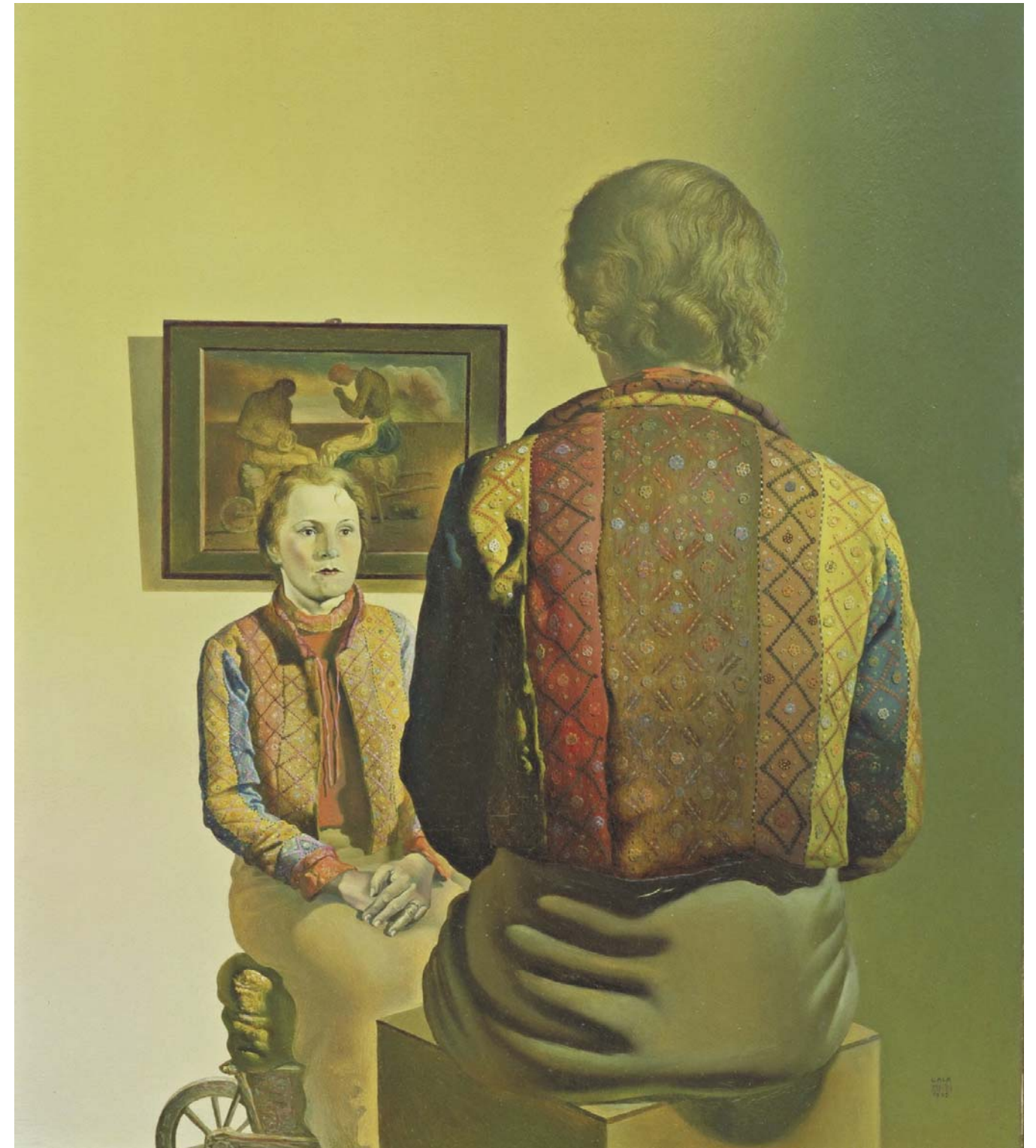
In *The Angelus of Gala*, behind Gala, hangs a version of *The Angelas*, the painting by Millet that so obsessed Dali; and the two people in the room apparently front-Gala and back-Gala - are juxtaposed in roughly the same fashion as the peasants in the picture. But on this occasion Dali has outrageously distorted Millet's composition, putting the peasants into a wheelbarrow (presumably as a form of erotic union) and altering the woman's attitude to increase the resemblance to a praying mantis that Dali claimed to find in the original; presumably she is about to copulate with the man and then to devour him.

Portrait of Gala
by Salvador Dali- 1935



Salvador Dalí was officially allied with Surrealism from 1929 to 1941, and even afterward his work continued to reflect the influence of Surrealist thought and methodology. His flamboyance, flair for drama and self-promotion, and hyperactive imagination reinvigorated the movement and its public popularity.

Portrait Of My First Cousin
by Salvador Dali- 1923





Time is the theme here, from the melting watches to the decay implied by the swarming ants. The monstrous fleshy creature draped across the painting's center is an approximation of Dalí's own face in profile.

The Persistence of Memory
by Salvador Dalí- 1931